



We  
Work  
for  
your health.



*We  
work  
for your health...*



# ***DISPOSABLE***

## ***Personal and Sectoral***

*Self-care / Hygiene Products*



# Table of Contents

About Us	5
Protective Clothing Gowns	6
Smock Laminated	14
PE Apron	16
Protective Clothing Coveralls	22
Overalls and Gown Sizes	27
Scrub Suits	28
Face Masks	32
Headwear	39
Sleeve Covers	42
Footwear	44
Disposable Bed Sheet	46
Disposable Gloves	49
Syringes	51
Face Shield	53
Antigen Test	55
Emergency Blanket	57
Body Bags	58



# ABOUT US

MAYAMED is a manufacturer of Personal Protective Equipment (PPE) in medical area with a wide range of products offering high quality, established in Türkiye. We have been developing, manufacturing and supplying protective medical clothing and related products for the best level of occupational safety for people around the world in medical area with the brand name "MAYAMED".

Quality, Compliance, Conformity, Certification are the main targets of ours in the manufacturing and supply of our products to our local and international clients. We also follow the developments and improvements and needs in the field of safety, reflect the latest innovations to our products to have satisfactory quality without compromising ethical principles.

Chairman of The Board,  
Maya Mahiye BAŞ







# Protective Clothing Gowns

## DISPOSABLE GOWN MYSS 7370

### DESCRIPTION

Minimal risk.  
To be used for during basic care, standard isolation, cover gown for visitors, or in a standard medical unit.

### PROPERTIES

- Made of SS fabric.
- FDA registered.
- Carried Standard:  
EN ISO 13688:2013 - EN 13034:2005+A1:2009  
EN 14126:2003 - EN 13795-1:2019
- 30-40 gsm.
- Disposable.
- Non- sterile (upon request, also available as sterile).
- Upon request ultrasonic sewing on the sleeves.
- Medical folding.
- With or without cuff.
- 2 or 4 ribs.
- Adhesive on the collars or laced



**AAMI  
LEVEL  
1**

## SURGICAL GOWN MYSMS 7380

### DESCRIPTION

Low risk  
To be used for during blood draw, suturing, in the Intensive Care Unit (ICU), or a pathology lab.

### PROPERTIES

- Made of SMS fabric.
- FDA registered.
- Carried Standard:  
EN ISO 13688:2013 - EN 13034:2005+A1:2009  
EN 14126:2003 - EN 13795-1:2019
- 40-60 gsm.
- Disposable.
- Non-sterile (upon request, also available as sterile).
- Upon request ultrasonic sewing on the sleeves is available.
- Medical folding.
- With or without cuff.
- 2 or 4 ribs.
- Adhesive on the collars or laced.



**AAMI  
LEVEL  
2**

### WEEKLY PRODUCTION CAPACITY:

Packing Details: 1 000 000 PCS

In Pack:	80
Box:	40*60*40
Weight:	10 - 11 Kg

### WEEKLY PRODUCTION CAPACITY:

Packing Details: 1 000 000 PCS

In Pack:	80
Box:	40*60*40
Weight:	11 - 12 Kg



## SURGICAL GOWN MYSMMS 7382

### DESCRIPTION

Low risk  
To be used for during  
blood draw, suturing, in the  
Intensive  
Care Unit (ICU), or a  
pathology lab.

### PROPERTIES

- Made of SMMS fabric.
- FDA registered.
- Carried Standard:  
EN ISO 13688:2013 - EN 13034:2005+A1:2009  
EN 14126:2003 - EN 13795-1:2019
- 40-60 gsm.
- Disposable.
- Non-sterile (upon request, also available as sterile).
- Upon request ultrasonic sewing on the sleeves is available.
- Medical folding.
- With or without cuff.
- 2 or 4 ribs.
- Adhesive on the collars or laced.

### WEEKLY PRODUCTION CAPACITY:

Packing Details: 1 000 000 PCS

In Pack:	80
Box:	40*60*40
Weight:	11 - 12 Kg



**AAMI  
LEVEL  
2**

## VISITOR PROTECT GOWN MYVG 7420

### DESCRIPTION

Produced 20 gr/m<sup>2</sup> - 30 gr/m<sup>2</sup>  
SS fabric Disposable,  
breathable, elastic cuff,  
waist laced, velcro tape  
on collar.  
Velcro Tape  
Velcro tape prevents opening  
of the collar.  
Four-Laced-Belt  
Four-laced belt system insures  
secure fit.  
Ribbed Cuff.  
Elastic rib insert at cuff maximizes fit and protection.

### PROPERTIES

- Made of SS fabric.
- FDA registered.
- Carried Standard:  
EN ISO 13688:2013 - EN 13034:2005+A1:2009  
EN 14126:2003 - EN 13795-1:2019
- 30 gsm - 40 gsm.
- Disposable.
- Non-sterile.
- Medical folding.
- With or without cuff.
- 2 or 4 ribs.
- Adhesive on the collars or laced.

### WEEKLY PRODUCTION CAPACITY:

Packing Details: 1 000 000 PCS

In Pack:	80
Box:	40*60*40
Weight:	10 - 11 Kg



**AAMI  
LEVEL  
1**





## SURGICAL GOWN MYSML 7390

### DESCRIPTION

Moderate risk.  
To be used for during arterial blood draw, inserting an Intravenous (IV) line, in the Emergency Room, or for trauma cases.

### PROPERTIES

- Made of SMS fabric with lamination.
- FDA 510(k) cleared.
- Carried Standard:  
EN ISO 13688:2013 - EN 13034:2005+A1:2009  
EN 14126:2003 - EN 13795-1:2019
- 40 gsm + 20 gsm polyester film.
- Disposable.
- Sterile (upon request, also available as non-sterile).
- Ultrasonic sewing on the sleeves.
- Surgical folding.
- Reinforcement completely up to the shoulders and the front side is completely up to the arms.
- Alcohol, blood and liquid proof.
- With or without cuff.
- 2 or 4 ribs.
- Adhesive on the collars or laced.
- Tape lines over the sewings.



**AAMI  
LEVEL  
3**

## SURGICAL GOWN MYLSG 7400

### DESCRIPTION

High risk.  
To be used for during long, fluid intense procedures, surgery, when pathogen resistance is needed or infectious diseases are suspected (non-airborne).

### PROPERTIES

- Made of SMS fabric with lamination.
- FDA 510(k) cleared.
- Carried Standard:  
EN ISO 13688:2013 - EN 13034:2005+A1:2009  
EN 14126:2003 - EN 13795-1:2019
- 65 gsm PP+PE.
- Sterile.
- Ultrasonic sewing on the sleeves.
- Surgical folding.
- Fully reinforced on the inner side.
- Alcohol, blood and liquid proof.
- With or without cuff.
- 4 ribs.
- Adhesive on the collars or laced.



**AAMI  
LEVEL  
4**



### WEEKLY PRODUCTION CAPACITY:

Packing Details: 1 000 000 PCS

In Pack:	80
Box:	40*60*40
Weight:	12 - 13 Kg

### WEEKLY PRODUCTION CAPACITY:

Packing Details: 1 000 000 PCS

In Pack:	80
Box:	40*60*40
Weight:	12 - 13 Kg

## ISOLATION GOWN MYIG 7620

### DESCRIPTION

Personal protective gowns are designed to create a barrier to prevent and minimize infections which may be transmitted through fluid exchange.

Resistant to liquids with its barrier feature. Resistant to moisture and bacterial penetration.

Ultrasonic stitches prevent leakage from these areas.

Puncture, tear and abrasion resistant.

Free from toxic substances.

Lint and dust free.

Ultrasonic stitches prevent leakage from these areas.



**AAMI  
LEVEL  
3**

Velcro Tape

Velcro tape prevents opening of the collar.

Four Laces

Four-laced belt system insures secure fit.

Ribanned Manshet

Elastic rib insert at cuff maximizes fit and protection.

### WEEKLY PRODUCTION CAPACITY:

Packing Details: 1 000 000 PCS

In Pack:	50
Box:	40*60*40
Weight:	10 - 11 Kg

- Carried Standard:

EN ISO 13688:2013

EN 13034:2005+A1:2009

EN 14126:2003

## DISPOSABLE SS LAMINATED MYIGS 7710

### PROPERTIES

Disposable

Laminated SS

Personal protective gowns are designed to create a barrier to prevent and minimize infections which may be transmitted through fluid exchange.

Resistant to liquids with its barrier feature. Resistant to moisture and bacterial penetration.

Ultrasonic stitches prevent leakage from these areas.

Puncture, tear and abrasion resistant.

Free from toxic substances.

Lint and dust free.

Ultrasonic stitches prevent leakage from these areas.



**AAMI  
LEVEL  
3**

Velcro Tape

Velcro tape prevents opening of the collar.

Four Laces

Four-laced belt system insures secure fit.

Ribanned Manshet

Elastic rib insert at cuff maximizes fit and protection.

- Carried Standard:

EN ISO 13688:2013

EN 13034:2005+A1:2009

EN 14126:2003

### WEEKLY PRODUCTION CAPACITY:

Packing Details: 1 000 000 PCS

In Pack:	50
Box:	40*60*40
Weight:	11 - 12 Kg



## COGOWN MYCG 7590

### DESCRIPTION

Moderate risk.  
To be used for during  
arterial blood draw,  
inserting an  
Intravenous(IV) line,  
in the Emergency Room,  
or for trauma cases.

### PROPERTIES

- Made of SMS fabric with lamination.
- FDA 510(k) cleared.
- Carried Standard:
- 40 gsm + 20 gsm polyester film.
- Disposable.
- Sterile (upon request, also available as non-sterile).
- Ultrasonic sewing on the sleeves.
- Surgical folding.
- Reinforcement completely up to the shoulders and the front side is completely up to the arms
- Alcohol, blood, and liquid proof.
- With or without cuff.
- 2 or 4 ribs.
- Adhesive on the collars or laced.
- Tape lines over the sewings.



**AAMI  
LEVEL  
4**

### WEEKLY PRODUCTION CAPACITY:

Packing Details: 1 000 000 PCS

In Pack:	80
Box:	40*60*40
Weight:	12 - 13 Kg

## CHEMOTHERAPY GOWN MYKG 7622

### PROPERTIES

- Protective, polyethylene-coated material tested against ASTM F1670 & 1671
- Materials and seams tested against top 11 chemotherapy drugs per ASTM F739-12
- Hook and loop neck, waist ties and knit cuffs.
- Taped seams to meet USP 800 guidelines.



**AAMI  
LEVEL  
4**

### WEEKLY PRODUCTION CAPACITY:

Packing Details: 1 000 000 PCS

In Pack:	80
Box:	40*60*40
Weight:	10 - 11 Kg



## WASHABLE GOWN MYWG 7490

### PROPERTIES

- 100 GSM: Produced from 80% Polyester + 20% Cotton.
- Washable.
- Have antibacterial feature.
- Made out of Cotton + Polyester fabric to combat perspiration.
- Hydrophobic.
- Water-repellent.
- Antibacterial properties are ensured by silver ions.
- Latex-free.
- Features anti-static properties.
- Class 1 Medical Protective Equipment.
- Tear-resistant.
- Neck adjustment is provided by hook and loop neck closure.
- Width adjustment is ensured with waist straps.
- Made out of breathable material to combat perspiration.
- Features elastic knit rib in order to increase the protection of the cuffed sleeves.
- Produced on the basis of covering ability, flexibility and lightness.



WASHABLE

## REUSABLE GOWN MYWRG 7600

### DESCRIPTION

Low risk.  
To be used for during blood draw, suturing, in the Intensive Care Unit (ICU), or a pathology lab.

### PROPERTIES

- Made of SMS fabric.
- FDA registered.
- Carried Standard: EN14126:2003 - EN 13795-1:2019
- 40-60 gsm.
- Reusable.
- Non-sterile (upon request, also available as sterile).
- Upon request ultrasonic sewing on the sleeves is available.
- Medical folding.
- With or without cuff.
- 2 or 4 ribs.
- Adhesive on the collars or laced.



WASHABLE

### WEEKLY PRODUCTION CAPACITY:

Packing Details: 1 000 000 PCS

In Pack:	80
Box:	40*60*40
Weight:	14 - 15 Kg

### WEEKLY PRODUCTION CAPACITY:

Packing Details: 1 000 000 PCS

In Pack:	80
Box:	40*60*40
Weight:	11 - 12 Kg





## PERFORMANCE SURGICAL GOWN MYP SG 7623

- Protective reinforced sleeves
- Ply-reinforced SMS front
- Breathable SMS fabric on back
- Low linting fabric
- Strong and durable
- 4 ties
- Knitted cuffs
- Adjustable hook and loop closure on neck
- Also available in sterile codes in-single layer packaging with overwrap and huck towels.



### WEEKLY PRODUCTION CAPACITY:

Packing Details: 1 000 000 PCS

In Pack:	80
Box:	40*60*40
Weight:	14 - 15 Kg

## REUSABLE WASHABLE SURGICAL GOWN MYRWSG 7495

- Long sleeves, open back, below the knee.
- The chest and arms of the product are made of double-layer fabric, the bottom side is terricotton, The upper part is made of plastered fabric.
- It has 4 laces on the neck and neck area.
- We will not pass water, blood and all kinds of chemicals.
- The cuffs are elastic.
- Easy to tear and not perishable.
- The chest and arm section of the product are made of microfilament 100% polyester fabric.
- The sleeve rubber rib of the apron is in a different color from the apron.
- With the barrier on the chest and arms, the contact of unwanted liquids with the body is prevented.
- In the barrier sections, the absorption of the liquid by the fabric is prevented.



### WEEKLY PRODUCTION CAPACITY:

Packing Details: 1 000 000 PCS

In Pack:	80
Box:	40*60*40
Weight:	14 - 15 Kg

MAYAMED

13

WASHABLE





# Smock - Laminated



## LAB COAT MYLC 7665

### DESCRIPTION

Low risk.  
To be used for during  
blood draw, suturing,  
in the Intensive  
Care Unit (ICU), or a  
pathology lab.

### PROPERTIES

- Made of SMS-SMMS fabric.
- FDA registered.
- 40-60 gsm.
- Disposable.
- Non-sterile (upon request, also available as sterile).
- Upon request ultrasonic sewing on the sleeves is available.
- Medical folding.
- With or without cuff.
- 2 or 4 ribs.
- Adhesive on the collars or laced.



## SMOCK – LAMINATED MYSL 7660

### DESCRIPTION

It is made of  
30 Micron PE material.

Disposable, liquid proof,  
prevent contact by  
wearing over protective  
clothing, long sleeved  
and finger-fastened  
waist-top apron.



### WEEKLY PRODUCTION CAPACITY:

Packing Details: 1 000 000 PCS

In Pack:	80
Box:	40*60*40
Weight:	11 - 12 Kg

### WEEKLY PRODUCTION CAPACITY:

Packing Details: 1 000 000 PCS

In Pack:	80
Box:	40*60*40
Weight:	12 - 13 Kg



# PE Apron





## PE APRON LONG SLEEVE MYPEA 7800

### DESCRIPTION

These gowns provide protection against light liquid spray.

### PROPERTIES

- Low-density polyethylene material.
- Effective protection against liquids.
- Adjustable tie fastening at waist.
- Worn over scrubs or gowns for additional protection.
- Cost-effective.
- Carried Standard:  
TS EN ISO 20347 - TS EN 14325  
TS EN ISO 6529 - TS EN ISO 20344  
TS EN 464 - TS EN 14126  
TS EN ISO 22610 - TS EN ISO 20344  
TS EN ISO 22612 - TS EN ISO 13485



## PE APRON WITHOUT SLEEVE MYPAW 7810



### WEEKLY PRODUCTION CAPACITY:

Packing Details: 1 000 000 PCS

In Pack:	60
Box:	40*60*40
Weight:	11 - 12 Kg

## POCKET APRON MYPA 7610

*Get information please.*



### WEEKLY PRODUCTION CAPACITY:

Packing Details: 1 000 000 PCS

In Pack:	60
Box:	40*60*40
Weight:	11 - 12 Kg



## PE APRON WITHOUT SLEEVE - ROLL MYPAW 7811

**Feature:** 100% Polyethylene PE Blue  
Low Density LDPE (PE-04)

**Dimensions:** Height: 120cm (+/-2cm)  
Width : 70cm(+/-1cm)

**Thickness:** 40micron(+/-2micron) (Double solid)

**Packaging:** Roll of 50 Pcs, 1 Box = 20 Rolls (1,000 pcs.) 1 Box = Average 17,50kg  
Box Size: 40cmX20cmX40cm  
Pallet Size: 80X120cm Pallet height.210cm  
(1 Pallet, 60 boxes = 60,000 aprons)

**Monthly Production:** 120 thousand units



## PE APRON WITHOUT SLEEVE - BOX ROLL MYPAW 7812

**Feature:** 100% Polyethylene PE Blue  
Low Density LDPE (PE-04)

**Dimensions:** Height: 120cm(+/-2cm)  
Width :70cm(+/-1cm)

**Thickness:** 40micron(+/-2micron) (Double solid)

**Packaging:** Box of 50 pcs, 1 Box = 16 Boxes (800 units)  
1 Box=Average 14.50kg  
Box Size: 40cmX20cmX40cm  
Pallet Size:80X120cm Pallet height.210cm  
(1 Pallet, 60 boxes = 48,000 aprons)

**Monthly Production:** 120 thousand units



## PE APRON WITHOUT SLEEVE - ROLL MYPAW 7813

**Feature:** 100% Polyethylene PE White  
Low Density LDPE (PE-04)

**Dimensions:** Height: 130cm(+/-2cm)  
Width :78cm(+/-1cm)

**Thickness:** 60micron(+/-2micron) (Double solid)

**Packaging:** Roll of 50 Pcs 1 Box = 10 rolls (500 pcs.)  
1 Box=Average 15.00kg  
Box Size: 49cmX17cmX38cm  
Pallet Dimension: 80X100cm Pallet height .210cm  
(1 Pallet, 40 boxes = 20,000 Aprons)

**Monthly Production:** 120 thousand units



## PE APRON WITHOUT SLEEVE - BOX ROLL MYPAW 7814

**Feature:** 100% Polyethylene PE White  
Low Density LDPE (PE-04)

**Dimensions:** Height: 130cm(+/-2cm)  
Width :78cm(+/-1cm)

**Thickness:** 60micron(+/-2micron) (Double solid)

**Packaging:** Box of 50 pcs, 1 Box = 10 boxes (500 units) 1 Box=Average 15,50kg  
Box Size: 49cmX17cmX38cm  
Pallet Dimension: 80X100cm Pallet height .210cm  
(1 Pallet, 40 boxes = 20,000 Aprons)

**Monthly Production:** 120 thousand units



### PE APRON WITHOUT SLEEVE - LEAF MYPAW 7815

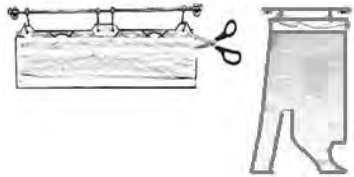
**Feature:** 100% Polyethylene PE Transparent  
High Density HDPE (Crystal)

**Dimensions:** Height: 120cm(+/-2cm)  
Width :80cm(+/-1cm)

**Thickness:** 40micron(+/-2micron) (Double solid)

**Packaging:** 50 pcs pack, 1 Box = 14 packs (700 pcs.) 1 Box=Average 15kg  
Box Size: 43cmX40cmX20cm  
Pallet Dimension: 80X120cm Pallet height 210cm  
(1 Pallet, 60 boxes = 42,000 pieces of Apron)

**Monthly Production:** 150 thousand units



### PE APRON WITHOUT SLEEVE - LEAF MYPAW 7816

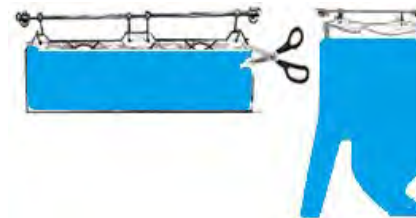
**Feature:** 100% Polyethylene PE Blue  
High Density HDPE (PE-02)

**Dimensions:** Height: 120cm(+/-2cm)  
Width :70cm(+/-1cm)

**Thickness:** 40micron(+/-2micron) (Double solid)

**Packaging:** 50 pcs pack, 1 Box = 20 packs (1,000 pcs.) 1 Box=Average 18kg  
Box Size: 40cmX40cmX20cm  
Pallet Dimension: 80X120cm Pallet height .210cm  
(1 Pallet, 60 boxes = 60,000 aprons)

**Monthly Production:** 150 thousand units





### PE APRON WITHOUT SLEEVE - LEAF MYPAW 7817

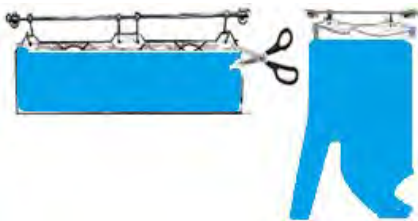
**Feature:** 100% Polyethylene PE Blue  
High Density HDPE (PE-02)

**Dimensions:** Height: 150cm(+/-2cm)  
Width :70cm(+/-1cm)

**Thickness:** 50micron(+/-2micron) (Double solid)

**Packaging:** 50 pcs pack, 1 Box = 20 packs (500 pcs.) 1 Box=Average 16kg  
Box Size: 40cmX40cmX20cm  
Pallet Size:80X120cm Pallet height.210cm  
(1 Pallet, 60 boxes = 30,000 aprons)

**Monthly Production:** 150 thousand units



### PE APRON WITHOUT SLEEVE - LEAF MYPAW 7818

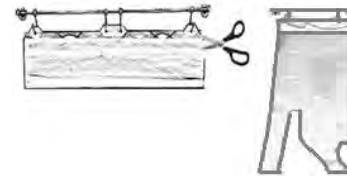
**Feature:** 100% Polyethylene PE Transparent  
High Density HDPE (PE-02)

**Dimensions:** Height: 150cm(+/-2cm)  
Width :120cm(+/-1cm)

**Thickness:** 40micron(+/-2micron) (Double solid)

**Packaging:** 50 pcs pack, 1 Box = 10 packs (500 pcs.) 1 Box=Average 17kg  
Box Size: 65cmX20cmX40cm  
Pallet Size:80X120cm Pallet height.210cm  
(1 Pallet, 40 boxes = 20,000 Aprons)

**Monthly Production:** 80 thousand units





## BREATHEASY COVERALL MYBC 7650

### DESCRIPTION

Produced with 30 gr/m<sup>2</sup> Spunbonded fabric provides short period protection from particles.

The hood provides protection by elastic band construction.

Cuffs and ankles come with elastic bands for extra protection.

There is a zipper in the front.



### WEEKLY PRODUCTION CAPACITY:

Packing Details: 1 000 000 PCS

In Pack:	60
Box:	40*60*40
Weight:	10 - 11 Kg

## DISPOSABLE COVERALL FOR KIDS MYCK 7351

### PROPERTIES

Material: Made of high quality 50g non-woven fabric.

Details:

- S for 70-100 cm.
- M for 110-120 cm.
- L for 130-150 cm.

Weight: 100g/pcs.

Be note that.

Useful: The product is dustproof, breathable and anti-bacterial, which is convenient for children to travel and can protect children's health to a certain extent.

Elastic Design: Disposable Coverall adopted with elastic design and front zipper, the coverall is convenient for your kids to wear.

Note: The clothes can't be washed with water(the protective effect will be lost after washing), but can be disinfected by alcohol.



### WEEKLY PRODUCTION CAPACITY:

Packing Details: 1 000 000 PCS

In Pack:	80
Box:	40*60*40
Weight:	10 - 11 Kg



## PROTECTIVE COVERALL TYPE 3/4 MY 7314

### DESCRIPTION

Coveralls are designed for protection against hazardous substances and contamination of both product and personnel. They are typically used for protection against dry particles and low hazardous splashes or sprays.

### PROPERTIES

- Made of SMS fabric with lamination.
- FDA registered.
- Carried Standard:  
EN ISO 13688:2013 - EN 13034:2005+A1:2009  
EN 14126:2003 - EN ISO 13932-1:2004+A1:2010
- 55-57 gsm.
- Disposable.
- Non-sterile (upon request, also available as sterile).
- The zippers are containing stoppers at both ends.
- Zipper contains adhesive tape for full protection.
- Upon request a logo can be attached to the chest area.
- Wrist and foot endings have strong elastics.
- Also strong elastics on the hood.

### WEEKLY PRODUCTION CAPACITY:

Packing Details: 1 000 000 PCS

In Pack:	50
Box:	40*60*40
Weight:	12 - 13 Kg



## PROTECTIVE COVERALL TYPE 5/6 MY 7315

### DESCRIPTION

Moderate risk.  
To be used for during arterial blood draw, inserting an Intravenous (IV) line, in the Emergency Room, or for trauma cases.

### PROPERTIES

- Made of SMS fabric with lamination.
- FDA registered.
- Carried Standard:  
EN 14126:2003 - EN ISO 13982-1:2004+A1:2010 -  
EN 13034:2005+A1:2009 - EN ISO 13688:2013
- 55-57 gsm.
- Disposable.
- Non-sterile (upon request, also available as sterile).
- The zippers are containing stoppers at both ends.
- Zipper contains adhesive tape for full protection.
- Upon request a logo can be attached to the chest area.
- Wrist and foot endings have strong elastics.
- Also strong elastics on the hood.
- With button colors.

### WEEKLY PRODUCTION CAPACITY:

Packing Details: 1 000 000 PCS

In Pack:	50
Box:	40*60*40
Weight:	12 - 13 Kg





## DISPOSABLE PROTECTIVE COVERALL WITH SMS TYPE 5-6 MY 7316

### DESCRIPTION

To prevent sweating and to be more comfortable, sms fabric is used on the back.

### PROPERTIES

- Made of SMS fabric with lamination.
- FDA registered.
- Carried Standard:  
EN 14126:2003 - EN ISO 13982:-1:2004+A1:2010 -  
EN 13034:2005+A1:2009 - EN ISO 13688:2013
- 55-57 gsm.
- Disposable.
- Non-sterile (upon request, also available as sterile).
- The zippers are containing stoppers at both ends.
- Zipper contains adhesive tape for full protection.
- Upon request a logo can be attached to the chest area.
- Wrist and foot endings have strong elastics.
- Also strong elastics on the hood.
- With button colors.



## DISPOSABLE PROTECTIVE COVERALL (Type 3-B/4-B/5-B/6-B) MY 7317

### DESCRIPTION

MY 7317 is designed to protect user from high and low pressure liquid chemical splashes and sprays (type 3/4), hazardous solid particules (type 5) and liquid chemicals (type 6). These coveralls are intended to be worn over underclothing and are designed to protect against incendiary electrostatic discharge if properly grounded.



- Breathable microporous laminated fabric reduces the risk of heat stress. 55 ± 5 g/m<sup>2</sup> density.
- Taped seams for added protection.
- Provides substantial protection against dust and light liquid splashes.
- Complies with EN 14126 and offers protection against certain biohazards.
- Skin-friendly nonwoven interior material.
- Elasticated waist, ankles and wrists provide convenience and freedom of movement.
- Front zipper covered by storm flap for added protection.
- Antistatically treated.
- No latex or silicon used in the making of this product.

CITY:

Packing Details: 1 000 000 PCS

In Pack:	50
Box:	40*60*40
Weight:	12 - 13 Kg



## REUSABLECOVERALL MYWRC 7690

### DESCRIPTION

Moderate risk.  
To be used for during  
arterial blood draw,  
inserting an Intravenous  
(IV) line, in the Emergency  
Room, or for trauma cases.

### PROPERTIES

- Made of SMS fabric with lamination.
- FDA registered.
- Carried Standard: EN 14126
- 55-57 gsm.
- Non-sterile (upon request, also available as sterile).
- The zippers are containing stoppers at both ends.
- Zipper contains adhesive tape for full protection.
- Upon request a logo can be attached to the chest area.
- Wrist and foot endings have strong elastics.
- Also strong elastics on the hood.
- With button colors.



WASHABLE

## WASHABLE COVERALL MYWCW 7580

### DESCRIPTION

Moderate risk  
To be used for during  
arterial blood draw,  
inserting an Intravenous  
(IV) line, in the Emergency  
Room, or for trauma cases.

### PROPERTIES

- Made of SMS fabric with lamination
- Washable, breathable
- 100 gr m<sup>2</sup> 30 washing.
- 120 gr m<sup>2</sup> 50 washing.
- FDA registered.
- Carried Standard: EN 14126
- 55-57 gsm.
- Non-sterile (upon request, also available as sterile).
- The zippers are containing stoppers at both ends.
- Zipper contains adhesive tape for full protection.
- Upon request a logo can be attached to the chest area.
- Wrist and foot endings have strong elastics.
- Also strong elastics on the hood.
- With button colors.



WASHABLE

### WEEKLY PRODUCTION CAPACITY:

Packing Details: 1 000 000 PCS

In Pack:	50
Box:	40*60*40
Weight:	12 - 13 Kg

### APACITY:

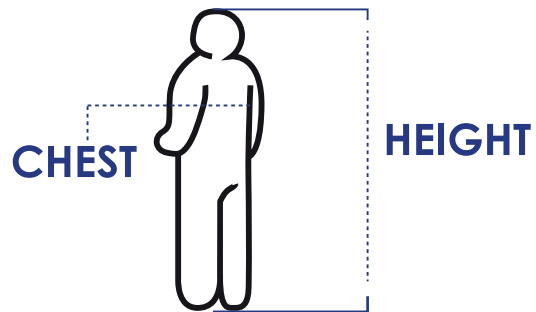
Packing Details: 1 000 000 PCS

In Pack:	50
Box:	40*60*40
Weight:	12 - 13 Kg



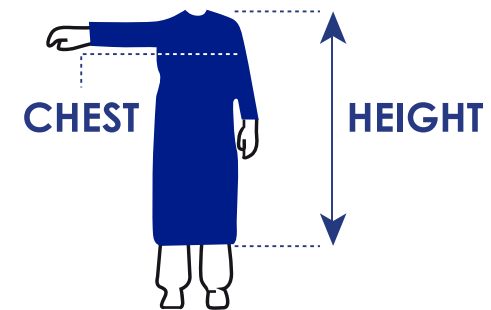
## OVERALLS SIZES

SIZE	HEIGHT	CHEST
S	189 cm	56 cm
M	194 cm	60 cm
L	199 cm	64 cm
XL	204 cm	68 cm
2XL	212 cm	72 cm
3XL	221 cm	76 cm



## GOWN SIZES

SIZE	A	B	C	D	E	F
S	110	120	56	30	14	17
M	115	125	58	30	16	17
L	120	135	60	30	18	17
XL	125	145	60	30	20	17
2XL	130	155	62	30	22	17
3XL	135	160	64	30	24	17



# Scrub Suits



## MEDIC SCRUB MYSC 7410

### DESCRIPTION

Surgical gown.  
Ergonomic.  
Liquid repellent.  
Bottom: Elastic waist,  
side pockets.  
Top: Short sleeve,  
3 pockets, V-neck.

### PROPERTIES

- Made of SMS fabric.
- FDA registered.
- EN ISO 13688:2013 - EN 14126:2003  
EN 13034:2005+A1:2009 - EN 13795-1:2019
- 40 gsm.
- Disposable.
- Non-sterile (upon request, also available as sterile).
- Upon request a logo can be attached to the chest area.
- Short or long sleeves versions are available.



## MEDIC SCRUB LAMINATED MYSCL 7411

### DESCRIPTION

Personal protective gowns are designed to create a barrier to prevent and minimize infections which may be transmitted through fluid exchange. Resistant to liquids with its barrier feature. Resistant to moisture and bacterial penetration. Ultrasonic stitches prevent leakage from these areas. Puncture, tear and abrasion resistant. Free from toxic substances. Lint and dust free. Ultrasonic stitches prevent leakage from these areas. Velcro Tape. Velcro tape prevents opening of the collar. Four Laces. Four-laced belt system insures secure fit. Ribanned Manshet. Elastic rib insert at cuff maximizes fit and protection.



### PROPERTIES

- Made of SMS fabric with laminated
- FDA registered
- EN 14126:2003
- 40 gsm
- Non-sterile (upon request, also available as sterile)
- Upon request a logo can be attached to the chest area.

### WEEKLY PRODUCTION CAPACITY:

Packing Details: 1 000 000 PCS

In Pack:	50
Box:	40*60*40
Weight:	12 - 13 Kg

### WEEKLY PRODUCTION CAPACITY:

Packing Details: 1 000 000 PCS

In Pack:	50
Box:	40*60*40
Weight:	12 - 13 Kg





## MEDIC SCRUB MYSC 7412

### DESCRIPTION

Medic Scrub is designed to be used in low-risk low concentration contaminated areas to prevent particulate transfer hazards.

### PROPERTIES

- Lightweight multi-layer SMS fabric.
- Breathable and comfortable.
- Long Sleeve.
- Knitted cuffs or elastic band.
- Hook and loop or sticky tab on neck.
- Full back for complete protection.
- Single-use.
- Latex and silicon free.
- Color: Blue & Yellow & White.



## DISPOSABLE PANTS LAMINATED MYDPL 7413

### PROPERTIES

- Lightweight multi-layer SMS
- Laminated fabric.
- Breathable and comfortable.
- Knitted cuffs or elastic band
- Hook and loop or sticky tab on neck.
- Full back for complete protection.
- Single-use.
- Latex and silicon free.
- Color: Blue & Yellow & White.



## DISPOSABLE PANTS MYDP 7415 MYDPL 7415

### PROPERTIES

- Lightweight multi-layer SMS fabric.
- Breathable and comfortable.
- Elastic or Laced on the waist.
- Single-use.
- Latex and silicon free.
- Color: Blue & Yellow & White.



### WEEKLY PRODUCTION CAPACITY:

Packing Details: 1 000 000 PCS

In Pack:	50
Box:	40*60*40
Weight:	12 - 13 Kg

### WEEKLY PRODUCTION CAPACITY:

Packing Details: 1 000 000 PCS

In Pack:	50
Box:	40*60*40
Weight:	12 - 13 Kg



## WASHABLE UNIFORM MYWU 7460

### PROPERTIES

- 100 GSM: Produced from 80% Polyester + 20% Cotton.
- Washable.
- Have antibacterial feature.
- Made out of Cotton + Polyester fabric to combat perspiration.
- Hydrophobic.
- Water-repellent.
- Antibacterial properties are ensured by silver ions.
- Latex-free.
- Features anti-static properties.
- Class 1 Medical Protective Equipment.
- Tear-resistant.
- Neck adjustment is provided by hook and loop neck closure.
- Width adjustment is ensured with waist straps.
- Made out of breathable material to combat perspiration.
- Features elastic knit rib in order to increase the protection of the cuffed sleeves.
- Produced on the basis of covering ability, flexibility and lightness.



WASHABLE

## HOSPITAL UNIFORM MYDU 7640

### DESCRIPTION

Manufactured from durable, breathable and washable material.

Optimal opacity and softness.

Designed for healthcare professionals.

Suitable for autoclave washing above 85°C.

2 pockets on top,  
1 inner and 1 outer pocket.

2 pockets on trousers,  
1 inner and 1 outer pocket.



WASHABLE

### WEEKLY PRODUCTION CAPACITY:

Packing Details: 1 000 000 PCS

In Pack:	80
Box:	40*60*40
Weight:	14 - 15 Kg

### WEEKLY PRODUCTION CAPACITY:

Packing Details: 1 000 000 PCS

In Pack:	40
Box:	40*60*40
Weight:	11 - 12 Kg





# Face Masks



## FACE MASK PREMIUM MYPM 7300

### PROPERTIES

- Filtering efficiency 99%.
- FDA registered.
- Carried Standard:  
TS EN ISO / IEC 17025:2017  
TS EN ISO 14683 + AC:2019  
EN ISO 10993 - 5  
EN ISO 10993 - 10
- Protective Standard: Type II
- Three-layers of antibacterial non-woven fabric.
- Anti-bacterium & anti-virus protection.
- Metal nose clip, perfect fit.
- Elastic ear straps, comfortable to wear.
- Structure: 3-layer material, middle-layer meltblown.
- 25 gsm meltblown layer.
- 25 gsm spunbond layer.
- Inspiratory resistance <150Pa.
- Expiratory resistance <120Pa.
- Color: Blue or White.
- Expiring Date: 5 years.



Type II

## FACE MASK PREMIUM PLUS MYPPM 7310

### PROPERTIES

- Filtering efficiency 99%.
- FDA registered.
- Carried Standard:  
TS EN ISO / IEC 17025:2017  
TS EN ISO 14683 + AC:2019  
EN ISO 10993 - 5  
EN ISO 10993 - 10
- Protective Standard: Type II
- Three-layers of antibacterial non-woven fabric.
- Anti-bacterium & anti-virus protection.
- Metal nose clip, perfect fit.
- Elastic ear straps, comfortable to wear.
- Structure: 3-layer material, middle-layer meltblown.
- 25 gsm meltblown layer.
- 25 gsm spunbond layer.
- Inspiratory resistance <150Pa.
- Expiratory resistance <120Pa.
- Color: Blue or White.
- Expiring Date: 5 years.



Type II

### WEEKLY PRODUCTION CAPACITY:

Packing Details: 5 000 000 PCS

In Pack:	50/1-10/1
Box:	40*60*40

### WEEKLY PRODUCTION CAPACITY:

Packing Details: 5 000 000 PCS

In Pack:	50/1-10/1
Box:	40*60*40



### 3 PLY MELTBLOWN FACE MASK TYPE II MYMM 7320

#### PROPERTIES

- 75 g. Meltblown face mask.
- Bacterial filtration 96%.
- 20 g Spunbond.
- 25 g Meltblown.
- 30 g Spunbond.
- High bacterial filtration efficiency.
- Thanks to the special filter in the middle ply, it has an anti-bacteria feature.
- Water-repellent.
- Fiberglass free.
- 3-ply.
- Fully Ultrasonic welded, produced in a hygienic environment automatically without human touch.
- Features anti-static properties.
- Class 1 Medical Protective Equipment.
- Tear-resistant.
- Thanks to its special flexible rubber, it minimizes the wear on the ears.
- Breathable, easy to breathe when wearing.
- Fits face perfectly by being flexible and soft.
- Thanks to its polypropylene (PP) coated nose wire, it does not harm, offers comfortable breathing.



Type II

#### WEEKLY PRODUCTION CAPACITY:

Packing Details: 5 000 000 PCS

In Pack:	50/1-10/1
Box:	40*60*40

### 3 PLY MELTBLOWN FACE MASK TYPE II R MYMR 7330

#### PROPERTIES

- 75 g Meltblown face mask.
- Bacterial filtration 96%
- 20 g Spunbond.
- 25 g Meltblown.
- 30 g Spunbond.
- High bacterial filtration efficiency.
- Thanks to the special filter in the middle ply, it has an anti-bacteria feature.
- Water-repellent.
- Fiberglass free.
- 3-ply.
- Fully Ultrasonic welded, produced in a hygienic environment automatically without human touch.
- Features anti-static properties.
- Class 1 Medical Protective Equipment.
- Tear-resistant.
- Thanks to its special flexible rubber, it minimizes the wear on the ears.
- Breathable, easy to breathe when wearing.
- Fits face perfectly by being flexible and soft.
- Thanks to its polypropylene (PP) coated nose wire, it does not harm, offers comfortable breathing.



Type II R

#### WEEKLY PRODUCTION CAPACITY:

Packing Details: 5 000 000 PCS

In Pack:	50/1-10/1
Box:	40*60*40





## FACE MASK PREMIUM LACE UP MYLM 7360

### PROPERTIES

- Filtering efficiency 99%.
- FDA registered.
- Carried Standard:  
TS EN ISO / IEC 17025:2017  
TS EN ISO 14683 + AC:2019  
EN ISO 10993 - 5  
EN ISO 10993 - 10
- Protective Standard: Type II R.
- Three-layers of antibacterial non-woven fabric.
- Anti-bacterium & anti-virus protection.
- Metal nose clip, perfect fit.
- Lace-up type with out elastics, comfortable to wear.
- Structure: 3-layer material, middle-layer meltblown.
- 25 gsm meltblown layer.
- 25 gsm spunbond layer.
- Inspiratory resistance <150Pa.
- Expiratory resistance <120Pa.
- Color: Blue or White.
- Expiring Date: 5 years.



Type II R

### WEEKLY PRODUCTION CAPACITY:

Packing Details: 5 000 000 PCS

In Pack:	50/1
Box:	40*60*40

## FFP2 - FFP3 FACE MASK MYMN 7670

### PROPERTIES

- N95 standard, Filtering efficiency 95%.
- FDA registered.
- Carried Standard: EN149
- Protective Standard: FFP2/FFP3
- Double-layer antibacterial melt-blown cloth + environmental non-woven fabric.
- Anti-bacterium & anti-virus protection.
- Metal nose clip, perfect fit.
- Elastic ear straps, comfortable to wear.
- Structure: 4-layer material, double-layer meltblown.
- Inspiratory resistance <150Pa.
- Expiratory resistance <120Pa.
- Color: White.
- Expiring Date: 2 year.



FFP2



FFP3

### WEEKLY PRODUCTION CAPACITY:

Packing Details: 1 000 000 PCS

In Pack:	50/1
Box:	40*60*40



## KIDS MASK PREMIUM MYKM 7350



Type II R

### PROPERTIES

- Filtering efficiency 99%.
- FDA registered.
- Carried Standard:  
TS EN ISO / IEC 17025:2017  
TS EN ISO 14683 + AC:2019  
EN ISO 10993 - 5  
EN ISO 10993 - 10
- Protective Standard: Type II R.
- Three-layers of antibacterial non-woven fabric.
- Anti-bacterial & anti-virus protection.
- Metal nose clip, perfect fit.
- Elastic ear straps, comfortable to wear.
- Structure: 3-layer material, middle-layer meltblown.
- 25 gsm meltblown layer.
- 25 gsm spunbond layer.
- Inspiratory resistance <150Pa.
- Expiratory resistance <120Pa.
- Color: Different colors and patterns.
- Expiring Date: 5 years.



Type II R

### WEEKLY PRODUCTION CAPACITY:

Packing Details: 3500 000 PCS

In Pack:	50/1-10/1
Box:	40*60*40



### SINGLE PLY WASHABLE FACE MASK MYWM 7470

#### PROPERTIES

- 115 GSM: Produced from 100% Cotton.
- High bacterial filtration efficiency.
- Washable.
- Have antibacterial feature.
- Antiperspirant.
- Antibacterial properties are ensured by silver ions.
- Produced as a single ply.
- Manufactured in hygienic environment.
- Class 1 Medical Protective Equipment.
- Tear-resistant.
- Thanks to its special flexible rubber, it minimizes the wear on the ears.
- Breathable, easy to breathe when wearing.
- Fits face perfectly by being flexible and soft.
- Latex-free.



WASHABLE

### DOUBLE PLY WASHABLE FACE MASK MYDWM 7475

#### PROPERTIES

- 230 GSM: Produced from 100% Cotton
- High bacterial filtration efficiency
- Washable
- Have antibacterial feature
- Antiperspirant
- Antibacterial properties are ensured by silver ions
- Produced as a double ply.
- Manufactured in hygienic environment
- Class 1 Medical Protective Equipment
- Tear-resistant
- Thanks to its special flexible rubber, it minimizes the wear on the ears
- Breathable, easy to breathe when wearing
- Fits face perfectly by being flexible and soft
- Latex-free



WASHABLE

#### WEEKLY PRODUCTION CAPACITY:

Packing Details: 5000 000 PCS

In Pack:	50/1
Box:	40*60*40

#### WEEKLY PRODUCTION CAPACITY:

Packing Details: 5000 000 PCS

In Pack:	50/1
Box:	40*60*40



## FFP2 NR KIDS FACE MASK MYKFM 7671

### PROPERTIES

- Non woven fabric
- Without valve
- Sizes suitable for children's face
- Various color options
- 5 layers of filtration (meltblown + 3 layers of spunbond)
- Nose clip
- Elastic, comfortable ear cup



### WEEKLY PRODUCTION CAPACITY:

Packing Details: 5000 000 PCS

In Pack:	50/1
Box:	40*60*40

## NANO FACE MASK MYNFM 7671

### PROPERTIES

Nano-technological washable mask made of Scuba fabric. With its elastic and flexible design, it fits your face perfectly. It has a breathable structure with high technology foam nano filter.



### WEEKLY PRODUCTION CAPACITY:

Packing Details: 5000 000 PCS

In Pack:	50/1
Box:	40*60*40





## *Headwear*



### DISPOSABLE BONNET MYDB 7430

#### PROPERTIES

- Material:  
16 gsm nonwoven.
- FDA registered
- Carried Standard:  
TS EN ISO 20347  
TS EN 14325  
TS EN ISO 6529  
TS EN ISO 20344  
TS EN 464  
TS EN 14126  
TS EN ISO 22610  
TS EN ISO 20344  
TS EN ISO 22612  
TS EN ISO 13485
- Size: 52 cm
- Double ultrasonic sewing.



### PROTECTIVE HOOD WITHOUT LAMINATED MYPHL 7701

#### PROPERTIES

- Without Laminated.
- Carried Standard:  
EN ISO 13688:2013  
EN 13034:2005+A1:2009  
EN 14126:2003  
EN 13795-1:2019



### PROTECTIVE HOOD LAMINATED MYPH 7700

#### PROPERTIES

- With Laminated.
- Carried Standard:  
EN 14126:2003  
EN ISO 13982-1:2004+A1:2010  
EN 13034:2005+A1:2009  
EN ISO 13688:2013



#### WEEKLY PRODUCTION CAPACITY:

Packing Details: 2 000 000 PCS

In Pack:	50
Box:	40*60*40
Weight:	16 - 17 Kg

#### WEEKLY PRODUCTION CAPACITY:

Packing Details: 2 000 000 PCS

In Pack:	
Box:	40*60*40
Weight:	



## WASHABLE CAP MYWC 7480



WASHABLE

### PROPERTIES

- 100 GSM: Produced from 80% Polyester + 20% Cotton
- Washable.
- Have antibacterial feature.
- Made out of cotton + polyester fabric to combat perspiration.
- Hydrophobic.
- Water-repellent.
- Antibacterial properties are ensured by silver ions.
- Latex-free.
- Features anti-static properties.
- Class 1 Medical Protective Equipment.
- Tear-resistant.
- Neck adjustment is provided by hook and loop neck closure.
- Width adjustment is ensured with waist straps.
- Made out of breathable material to combat perspiration
- Features elastic knit rib in order to increase the protection of the cuffed sleeves.
- Produced on the basis of covering ability, flexibility and lightness.
- Adjustable.

### WEEKLY PRODUCTION CAPACITY:

Packing Details: 750 000 PCS

In Pack:	500
Box:	40*60*40
Weight:	14 - 15 Kg

**SURGICAL CAP TIED AT THE BACK  
MYDB 7432**

Single-use, latex-free surgical cap made of non-woven material, tied at the back. Prevents hair or other particles from entering the surgical area. Breathable. Blue or green or white.



**SURGICAL JACK CAP  
MYDB 7434**

Single-use, latex-free operating cap made of non-woven material. Prevents hair or other particles from entering the surgical area. Breathable. Blue or green or white.



**WEEKLY PRODUCTION CAPACITY:**

**Packing Details: 2 000 000 PCS**

In Pack:	50
Box:	40*60*40
Weight:	16 - 17 Kg

**WEEKLY PRODUCTION CAPACITY:**

**Packing Details: 2 000 000 PCS**

In Pack:	50
Box:	40*60*40
Weight:	16 - 17 Kg





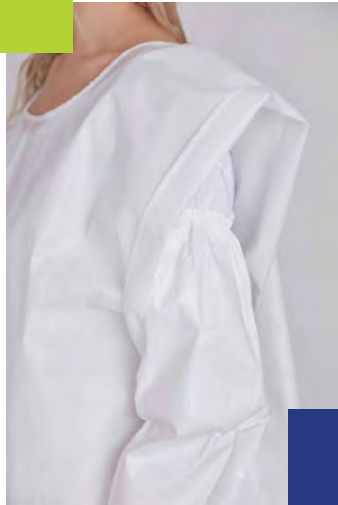
# *Sleeve Covers*



## PROTECTIVE OVERSLEEVE MYPOS 7550

### DESCRIPTION

Taped Overshoes for extra protection. The aim is to limit the transmission of infectious agents. They have a non-slip sole, are laced, and come with elastic band on the top part for extra protection. Ergonomic construction insures better fit



### PROPERTIES

- Our protective oversleeve provides extra protection when used with our coveralls or gowns.
- Ergonomic construction covering the elbow.
- Elastic band at both ends ensure maximum barrier against fluids.
- Elastic band worn around the thumb ensures perfect fit.

### WEEKLY PRODUCTION CAPACITY:

#### Packing Details:

In Pack:	
Box:	40*60*40

## PROTECTIVE OVERSLEEVE SEAMLESS MYPOSS 7560

### DESCRIPTION

Personal Protective Equipment aiming to give extra security to block the transmission of infectious agents. It is fixed to the wrist with a brace. Provided with soft elastic on wrist and elbow areas. Liquid proof and ergonomic. Ultrasonic Stitches.



### PROPERTIES

- Our protective oversleeve provides extra protection when used with our coveralls or gowns.
- Ergonomic construction covering the elbow.
- Elastic band at both ends ensure maximum barrier against fluids.
- Elastic band worn around the thumb ensures perfect fit.

### WEEKLY PRODUCTION CAPACITY:

#### Packing Details:

In Pack:	
Box:	40*60*40







## Footwear



### DISPOSABLE OVERSHOE NONWOWEN MYSO 7440

#### DESCRIPTION

Material:  
25 gsm SS nonwoven.  
FDA registered.  
Size: 38 cm.  
- Carried Standard:  
TS EN ISO 20347  
TS EN 14325  
TS EN ISO 6529  
TS EN ISO 20344  
TS EN 464 - TS EN 14126 - TS EN ISO 22610  
TS EN ISO 20344 - TS EN ISO 22612 - TS EN ISO 13485



### DISPOSABLE OVERSHOE PE MYSO 7680

#### PROPERTIES

Material:  
HDPE.  
FDA registered.  
Size: 30 mic.  
- Carried Standard: TS EN ISO 20347  
TS EN 14325 - TS EN ISO 6529  
TS EN ISO 20344 - TS EN 464  
TS EN 14126 - TS EN ISO 22610  
TS EN ISO 20344  
TS EN ISO 22612  
TS EN ISO 13485



#### WEEKLY PRODUCTION CAPACITY:

Packing Details: 5 000 000 PCS

In Pack:	50
Box:	40*60*40

### COVERSHOE TAPED - LONG MYCTL 7434

#### DESCRIPTION

Material:  
PP+PE  
FDA registered  
- Carried Standard:  
EN 14605:2005+A1:2009  
EN 14126:2003  
EN ISO 13688:2013  
57 gsm  
Sole: 250 gsm



### DISPOSABLE COVERSHOE LONG MYCL 7456

#### PROPERTIES

Material: PP+PE  
FDA registered  
57 gsm  
Sole: 250 gsm  
- Carried Standard:  
EN 14126:2003  
EN ISO 13982:-1:2004+A1:2010  
EN 13034:2005+A1:2009  
EN ISO 13688:2013



#### WEEKLY PRODUCTION CAPACITY:

Packing Details: 5000 000 PCS

In Pack:	250 pcs
Box:	40*60*40
Weight:	20 Kg





**Disposable Bed  
Sheets**





### DISPOSABLE SINGLE BED SHEET MY 7500

#### PROPERTIES

- Portable-Practic-Private-Hygienic.
- Personel use disposable bed sheet.
- Zero bacteria risk.



### DISPOSABLE PILLOW COVER MY 7520

#### PROPERTIES

- Portable-Practic-Private-Hygienic.
- Personel use disposable bed sheet.
- Zero bacteria risk.



### DISPOSABLE PATIENT STRETCHER MY 7510

#### PROPERTIES

- Portable-Practic-Private-Hygienic.
- Personel use disposable bed sheet.
- Zero bacteria risk.



#### WEEKLY PRODUCTION CAPACITY:

Packing Details: 500 000 PCS

In Pack:	
Box:	40*60*40

#### WEEKLY PRODUCTION CAPACITY:

Packing Details: 5000 000 PCS

In Pack:	
Box:	40*60*40



## DISPOSABLE TOWEL MY 7540

### PROPERTIES

- Personel use disposable towels.
- Standard towels absorb 3 times more than cotton towels.
- Extra thick towels absorb 5 times more.



Hand Towel



Bath Towel



Head Towel

### WEEKLY PRODUCTION CAPACITY:

Packing Details: 500 000 PCS

In Pack:	
Box:	40*60*40

## DISPOSABLE SINGLE DUVET COVER MY 7530

### PROPERTIES

- Portable-Practic-Private-Hygienic.
- Personel use disposable bed sheet.
- Zero backteria risk.



### WEEKLY PRODUCTION CAPACITY:

Packing Details: 5000 000 PCS

In Pack:	
Box:	40*60*40





# Disposable Gloves



## DISPOSABLE GLOVES MYGLV 7450



**Transparent  
Gloves**

### PROPERTIES

- Made of polyethylene raw material.
- Does not cause allergy since it does not contain latex and powder.
- Gloves are developed for both hands.
- Suitable for use in cleaning works, hairdressing services and food industry.
- Transparent color.



**Latex Gloves**

### PROPERTIES

- Latex gloves, which are extremely resistant to puncture and tear, provide effective protection.
- Latex gloves, which offer the ability to wear longer, have also reduced the problem of continuous replacement.
- The ability to grasp small materials and objects is very high for people working in the medical field.

### WEEKLY PRODUCTION CAPACITY:

#### Packing Details:

In Pack:	
Box:	40*60*40
Weight:	



**Nitrile Gloves**

### PROPERTIES

- It is resistant to abrasion and tear.
- Thanks to the nitrile coating, it shows resistance against oil and grease.
- Thanks to its special mold, it fits perfectly in the hand.



# *Syringes*

### HYPODERMIC SYRINGE 5 ml



#### PROPERTIES

- Green colored stopper provides a greater contrast with scale markings
- Designed and manufactured to reduce environmental impact
- Up to 20% less material than BD Plastipak™ syringes to reduce raw material consumption
- Clinical waste weight is reduced by 20%
- Plant utilizes 100% of electricity from renewable sources.

#### WEEKLY PRODUCTION CAPACITY:

##### Packing Details:

In Pack:

Box:

40\*60\*40

Weight:





# Face Shield





## FACE SHEILD MYFS 7630



### DESCRIPTION

- It protects the face from possible droplets, liquid microbes, infections and small objects. Suitable for all users.
- It can be used repeatedly by disinfecting with cologne / alcohol.



### WEEKLY PRODUCTION CAPACITY:

#### Packing Details:

In Pack:

Box:

40\*60\*40

Weight:





# Antigen Test



## ANTIGEN TEST



### DESCRIPTION

Although the PCR test is performed on people with symptoms, it can also be applied on people who do not have symptoms. Depending on the patient's condition, samples are taken from the upper (nose) or lower (throat) airways. It should usually be performed in large hospitals or well-equipped PCR laboratories. Also, tests performed in this way can take several hours or days to produce results, which weakens rapid clinical responses. To overcome this, he developed a test that, using a portable lateral flow reader, could produce fast, reproducible and high-precision results without the need for highly trained personnel and complexity. As a result, we are opening up the possibility to refer patients to quarantine earlier for better clinical decision making and reducing the spread of disease. The COVID-19 antigen test kit continues to work hard to optimize function, further improve viral particle lower bound detection and provide accurate results for targeted populations and environments.

### PROPERTIES

- With the help of a cotton swab, a sample is taken from the upper or lower respiratory tract.
- The sample is mixed for 30 seconds in the plastic bottle containing the solution.
- The cotton swab is broken at the marked place and the cap of the bottle is closed
- Drop 3 drops of our test kit into the slot marked S and wait for 15 minutes.
- Results after 30 Minutes are Invalid.





## Emergency Blanket



## DISPOSABLE EMERGENCY BLANKET (HYPOTHERMIC BLANKET) MY 7545



### DESCRIPTION

Rescue blanket consisting of two layers firmly bonded together, A 12 µm thin, tear-resistant, transparent and waterproof polyester film (PET) and an extremely thin, slightly transparent (1%) aluminum layer.







## Body Bags



**BODY BAG MYBB 8000****DESCRIPTION**

ADULT

80-100 GR/m2 Body Bag,

80 CM x 200 CM With Zipper,

Transparent PVC Pocket,

With 6 carrying handles.





# Plaster Bandage



## PLASTER BANDAGE MYPB 9000



### DESCRIPTION

It is a medical material produced by absorbing an orthopedic plaster mix of hydrophilic gauze knitted from 100% cotton. It gets wet homogeneously within 10 seconds after being immersed in water. It can be easily shaped thanks to its soft structure and dense gypsum cream. It freezes in 1-8 minutes after application. They do not shed after freezing.





**MAYAMED TEKSTİL DIŞ TİCARET LİMİTED ŞİRKETİ**

**Contact Us**

**Head Office:** Oruçreis Mh. Tekstilkent Cd. Koza Plaza A Blok No:12B/033 - Esenler - İstanbul / TURKEY

Phone : +90 532 678 5295 - Email: info@mayamedical.com.tr

**Europe Head Office:** De Weven 2 3583 Beringen BELGIE BTW: BE 0881 097 520

Phone: +32 477 99 16 62

**Balkan Office:** Bulevar Vojvode Misica 37, Belgrade, Serbia

**U.S.A Office:** 7401 Setting Sun Way Columbia Maryland 21046, U.S.A

Phone : +1(631) 401 3252

**Factory Address:** Kahta OSB Mevkii 9. Cadde No:2 Salkımbağı Köyü - Kahta - ADIYAMAN - TÜRKİYE

[www.mayamedmedical.com](http://www.mayamedmedical.com)



